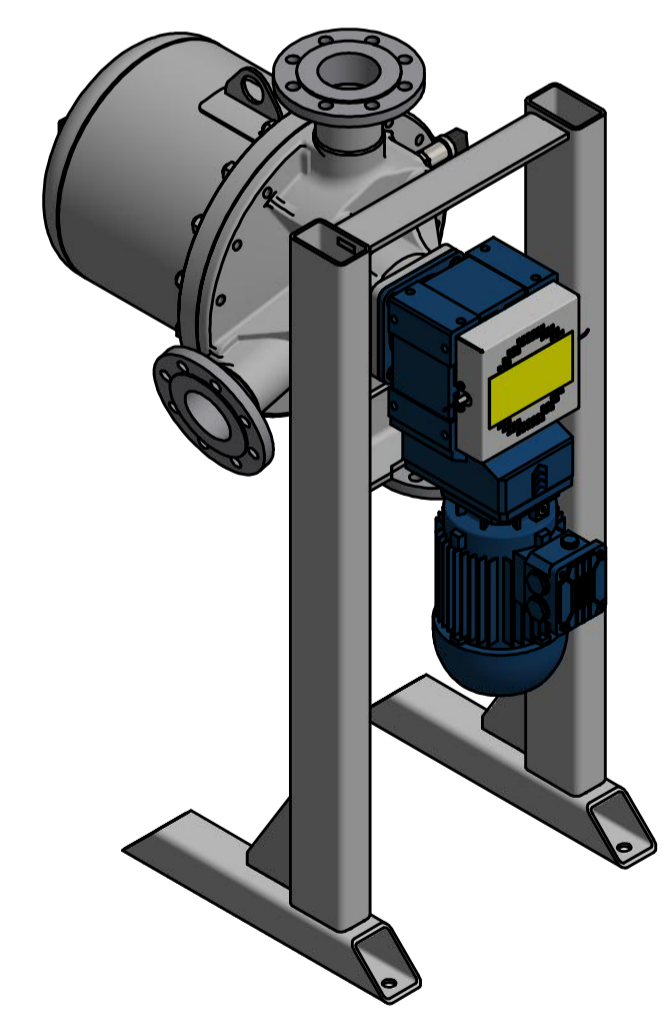
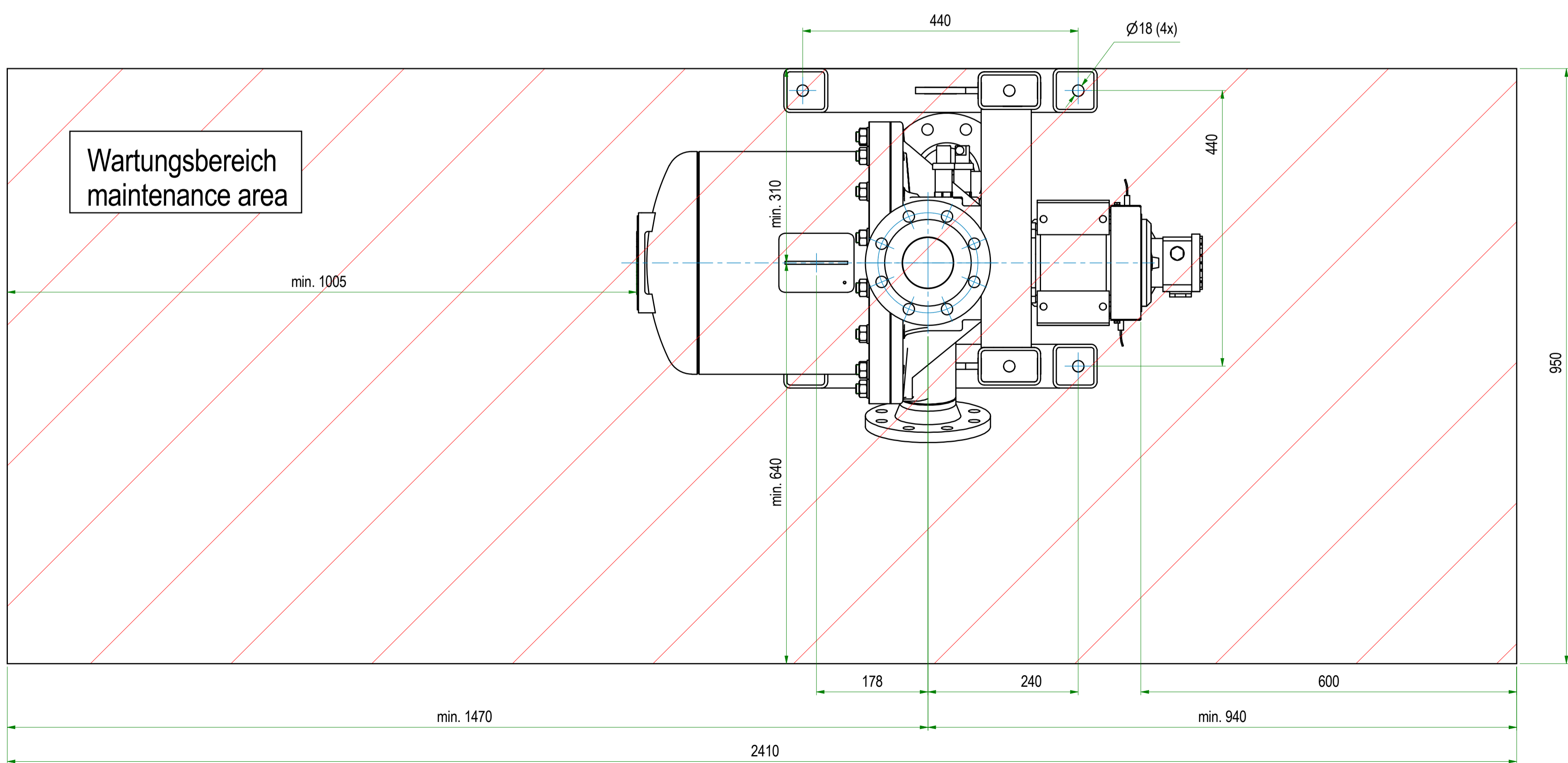
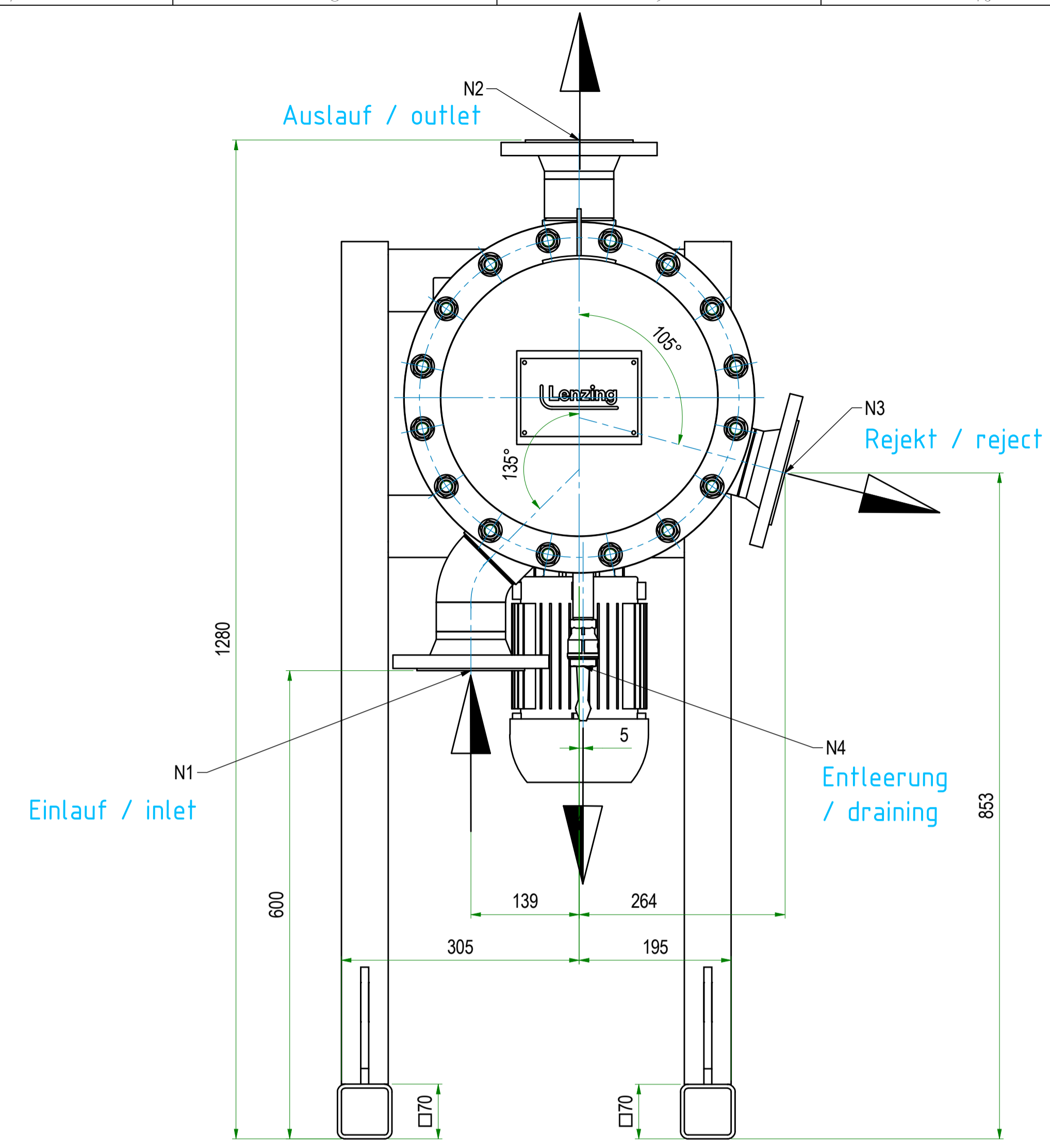
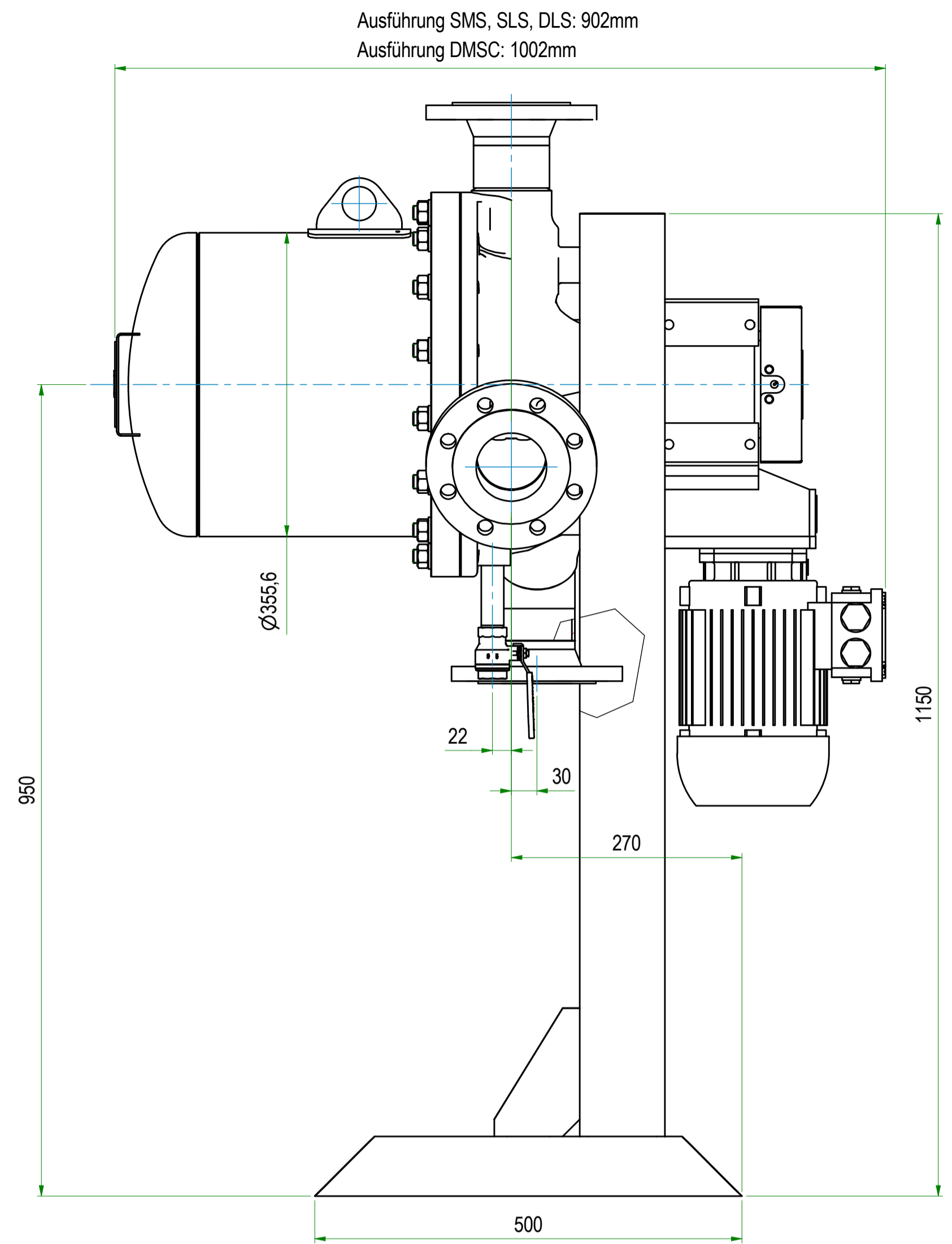
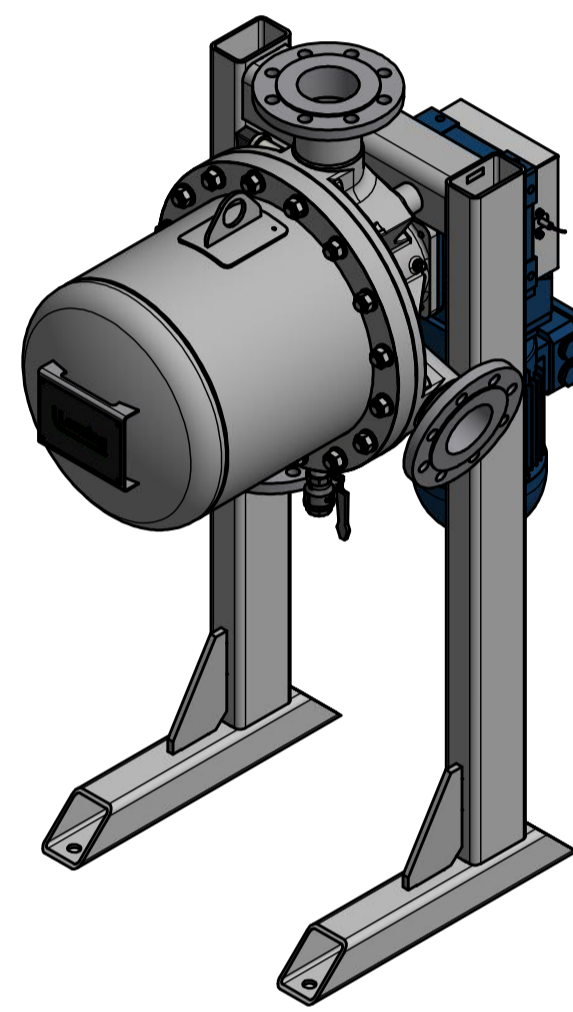
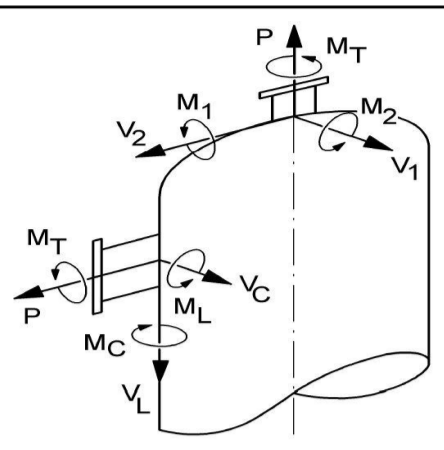


Stützentabelle / Nozzle Schedule							
Name Mark	DN Dimension	PN Class	Position	Flansch Flange	Dichtfläche Face	Benennung Service	Bemerkung Remark
N1	DN80	PN16		EN 1092-1/11		Einlauf	
N2	DN80	PN16		EN 1092-1/11		Auslauf	
N3	DN80	PN16		EN 1092-1/11		Rejekt	
N4	G3/4"	PN16				Entleerung	
N5	G1/2"	PN16				Differenzdruckmessung	

Stützenlasten / Nozzle Loads acc. to AD 2000 *						
* AD 2000 S345 - WRC BULLETIN 107, 297						
Stützen Nozzle	Kräfte / Forces [N]			Momente / Moments [Nm]		
	P	V <sub>L</sub> / V <sub>L</sub>	V <sub>C</sub> / V <sub>C</sub>	M <sub>L</sub> / M <sub>L</sub>	M <sub>C</sub> / M <sub>C</sub>	M <sub>T</sub> / M <sub>T</sub>
N1	1500	1500	1500	300	300	300
N2	1500	1500	1500	300	300	300
N3	1500	1500	1500	300	300	300
N4	200	200	200	40	40	40
N5	-	-	-	-	-	-



Gesamtgewicht leer ca. 228kg  
total weight empty approx. 228kg

rev.	date	approved	designer	modification text
-	12.02.2020	LAGGRPILGWMA	LAGGRPILGWMA	

Created by Wiesinger Martin		Document type	Confidentiality	
Checked by		Material number	DCC	Position method ISO 8044
Approved by LAGGRPILGWMA		Description	Scale	
<b>Lenzing</b> Innovative by nature		<b>installation drawing</b> Aufstellungszeichnung OptiFI-M 250-180	1:5	
Document status		Date of first issue	Date of latest issue	Plant classification
Released	12.02.2020		5358	
Lenzing Group Company		Format	Sheet	
Lenzing Aktiengesellschaft		A1	1/1	
		Drawing Number	Rev.	
		10403712	-	

All rights reserved. No part of this Document may be reproduced, stored in a retrieval system or transmitted in any form or by any means, including photocopying and recording, without the prior written permission of the issuing Group Company. The intellectual property rights herein, if any, are reserved and shall be carried out in relation to this Document, a civil claim for damages may be made and/or a criminal prosecution may result.